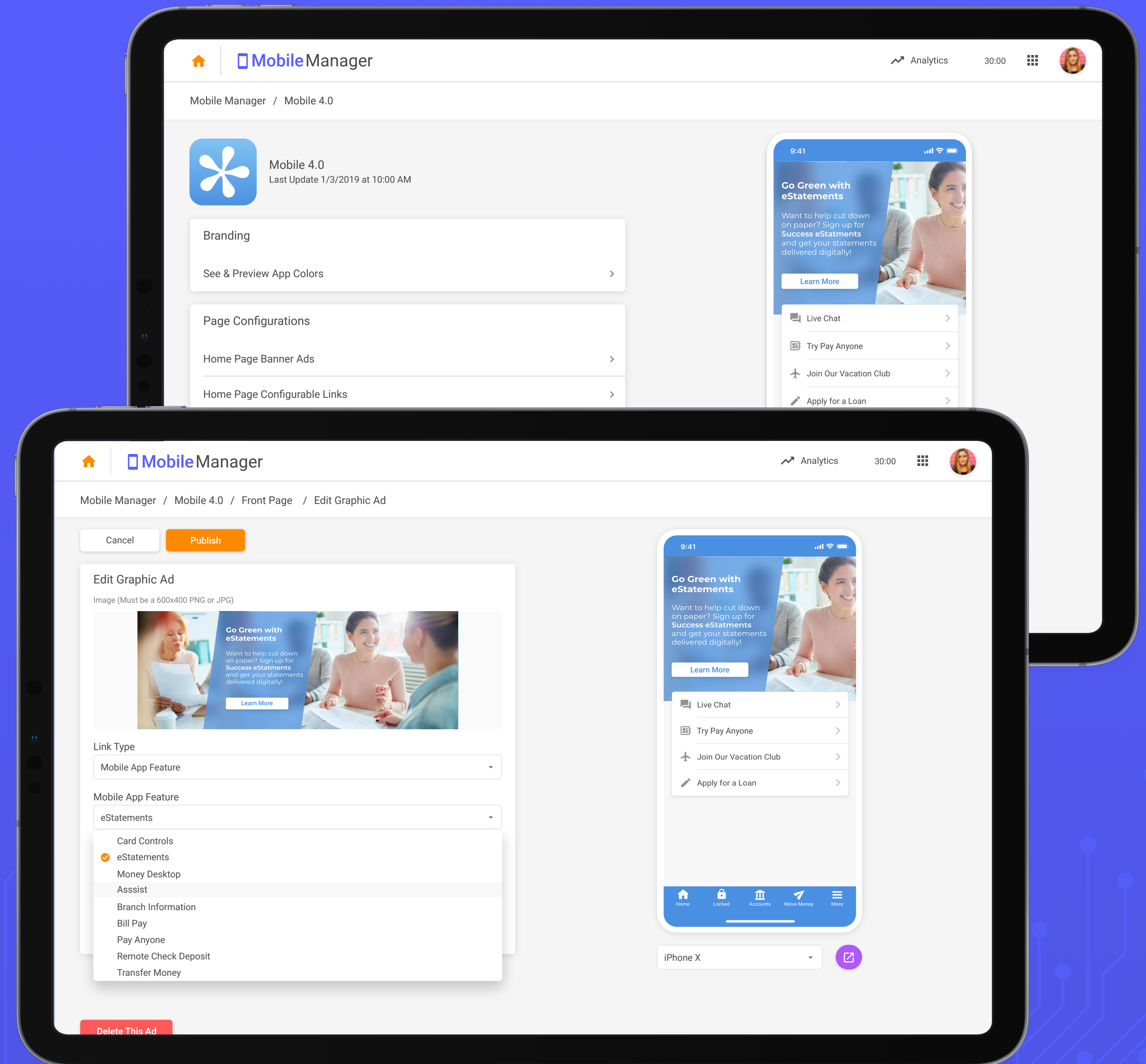


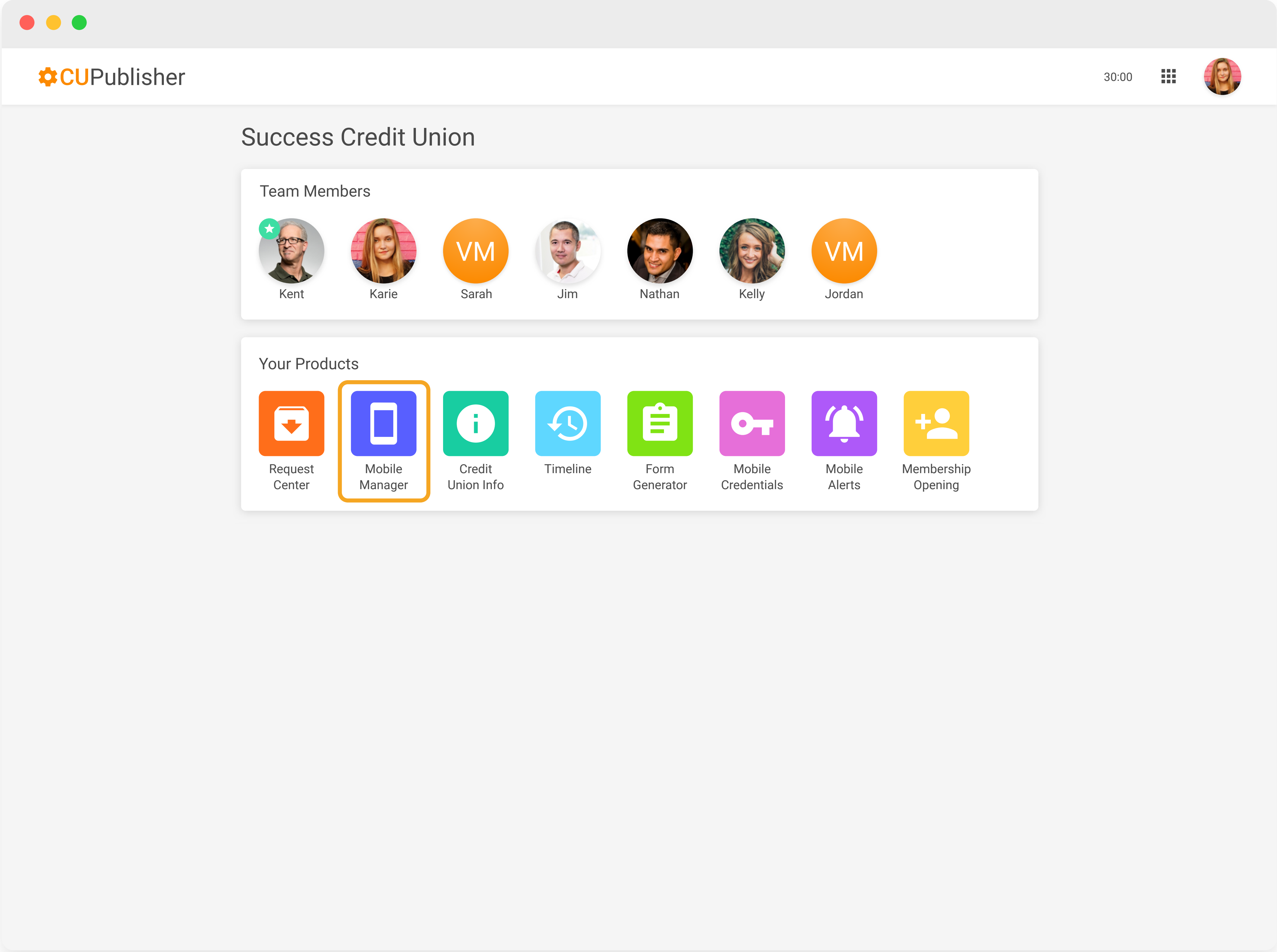
# MobileManager

Mobile Technologies Group • CU\*Answers



# What is “Mobile Manager?”

Mobile Manager allows you to control features and settings your Credit Union’s flagship mobile app. You will be able to manage your apps advertising, colors, logos, configurable text, and more.

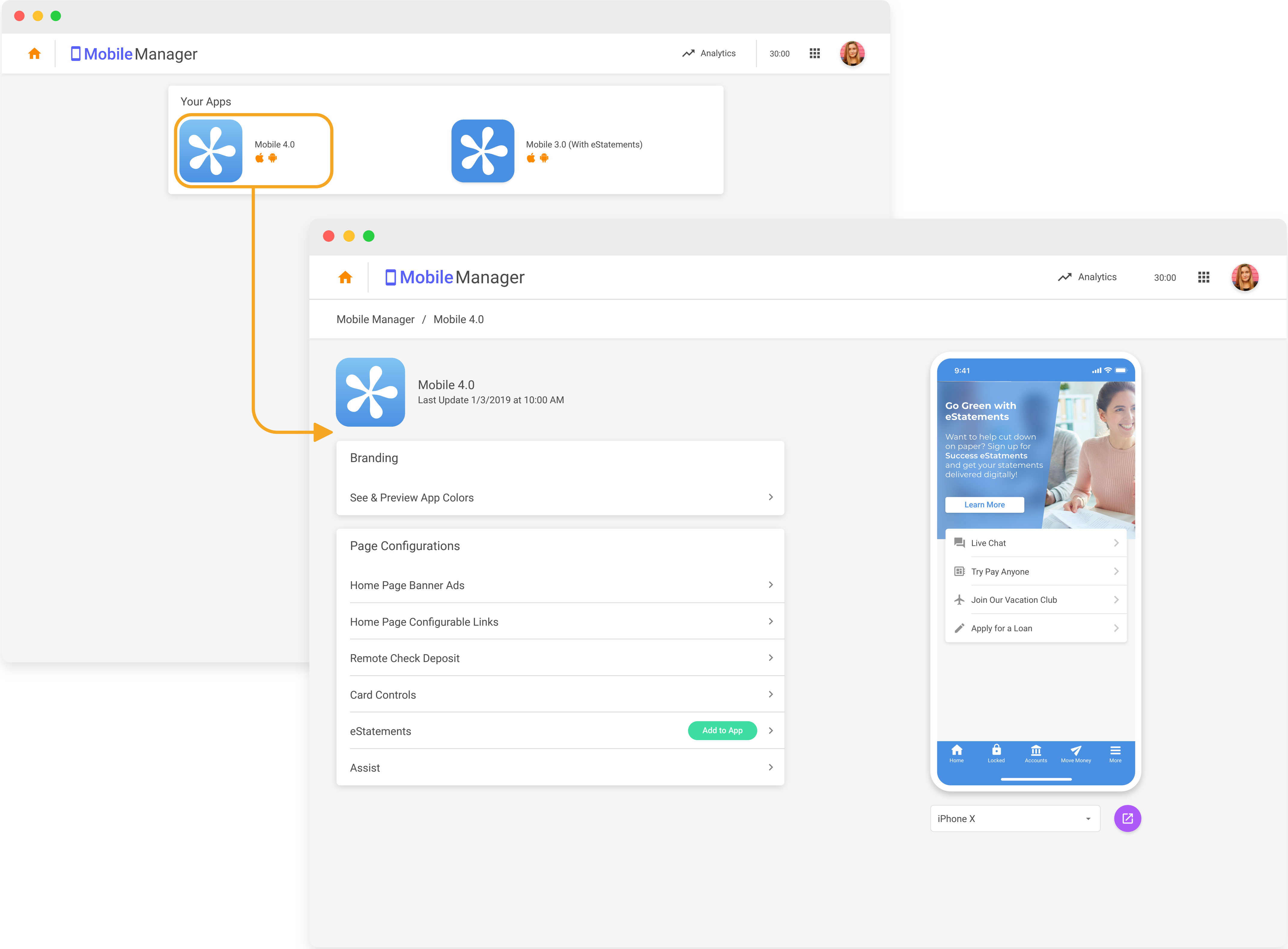


## Managing Your Apps

When you open the Mobile Manager, all of your active mobile apps will be available to edit. Configurations for your apps include:

- Colors & Logo
- Front Page Ads & Buttons
- RDC Feature Image and Text
- Card Controls Feature Image and Text
- eStatements Feature Images and Text
- List of Assist Questions

In desktop mode, you can also see your app in a preview window in a variety of aspect ratios representing common mobile devices.

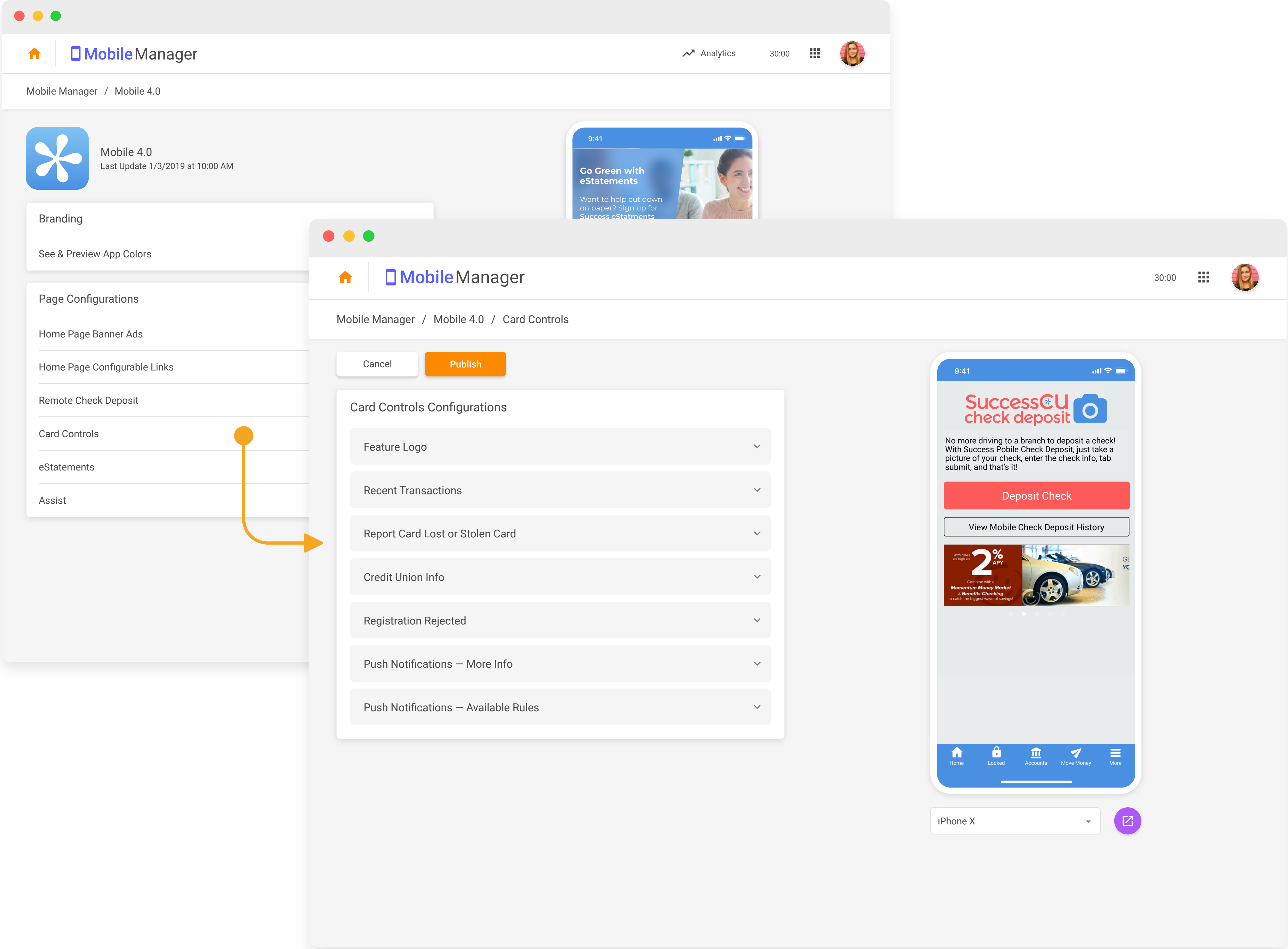




## Edit Your App's Content

To edit a part of your app, simply navigate to a settings page and make the changes you want. This may be a logo update, new advertisement, or new text for a configurable feature.

Once you are satisfied with your changes, click Publish and send your changes live. Your members will automatically see this new change next time they launch the app, no app update necessary!

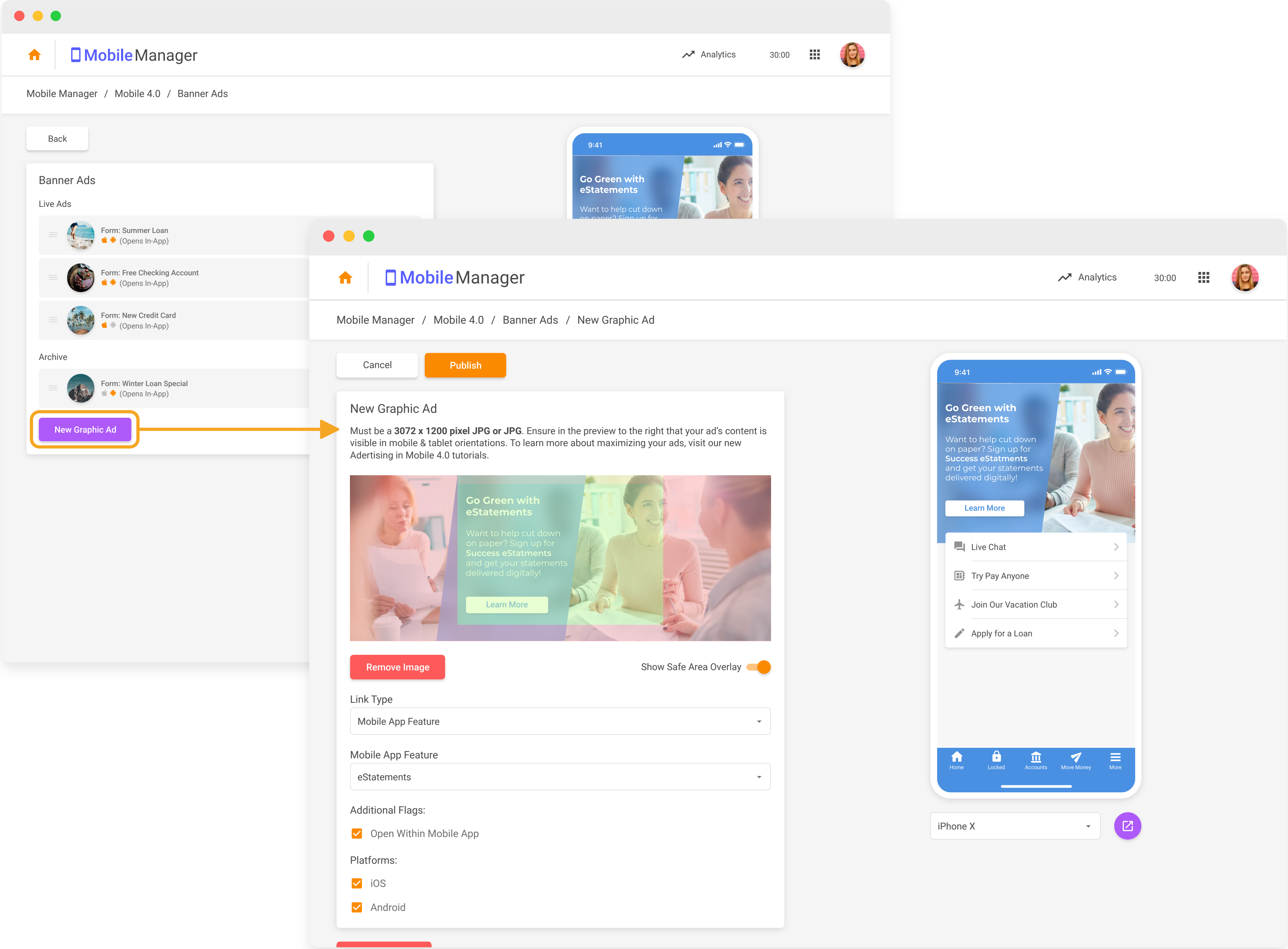




## Configuring Graphic Ads

Consider App Home like the welcome mat for your members. Mobile Manager lets you configure premium mobile real estate to communicate and market to your members.

Graphic ads on your homescreen can be configured to to link graphic and RDC ads along with button links to open external web pages, or even to open specific features in your Credit Union’s mobile app (learn more on the next page on **Feature Linking**).



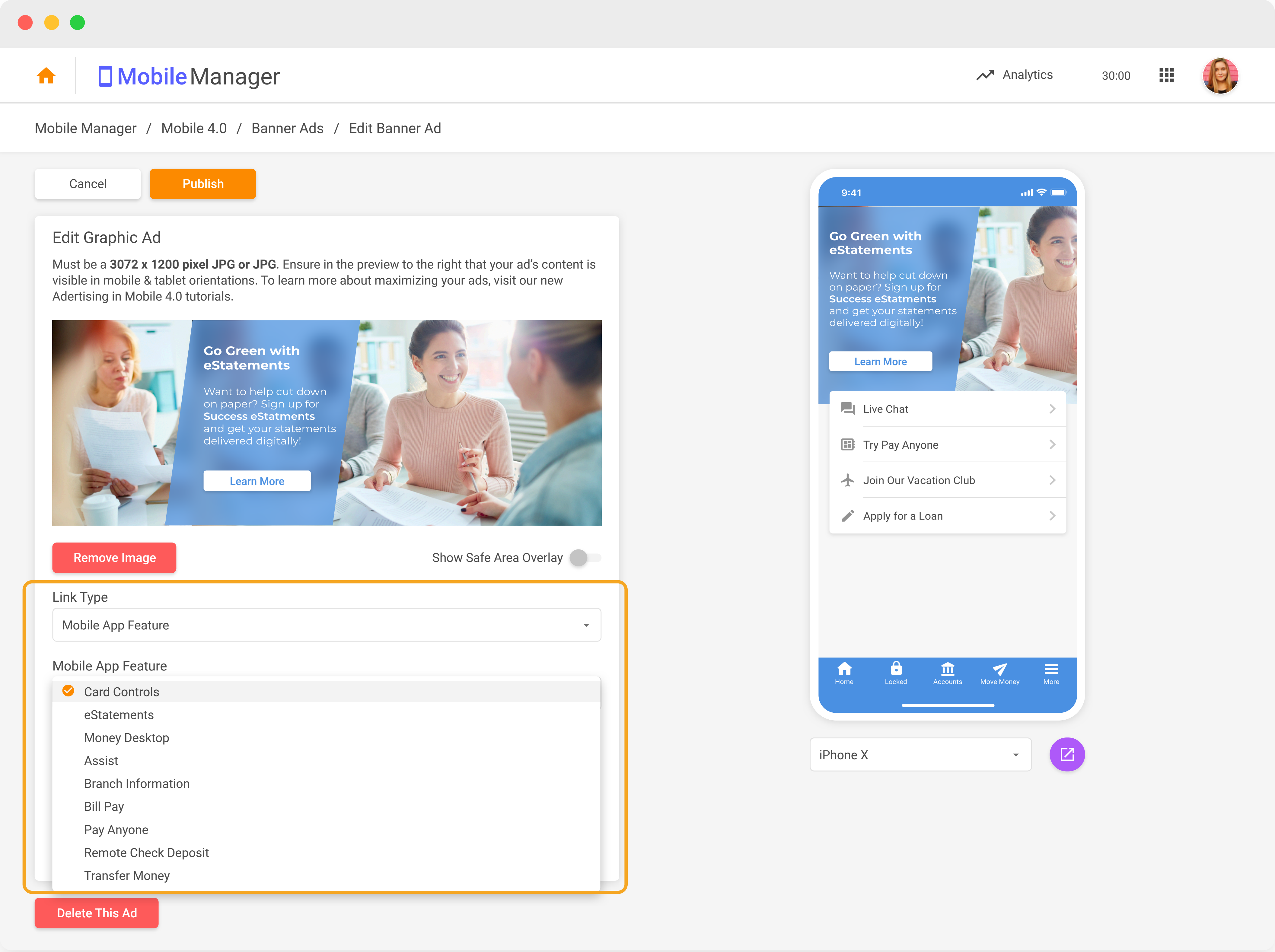


NEW

## Feature Linking

One of the newest features in Mobile Manager is the ability to link graphic ads on the app homescreen to specific features in your Credit Union’s mobile app.

To configure this feature, you can select “Mobile App Feature” as the link type when creating a new — or editing an existing — graphic ad on your homescreen.



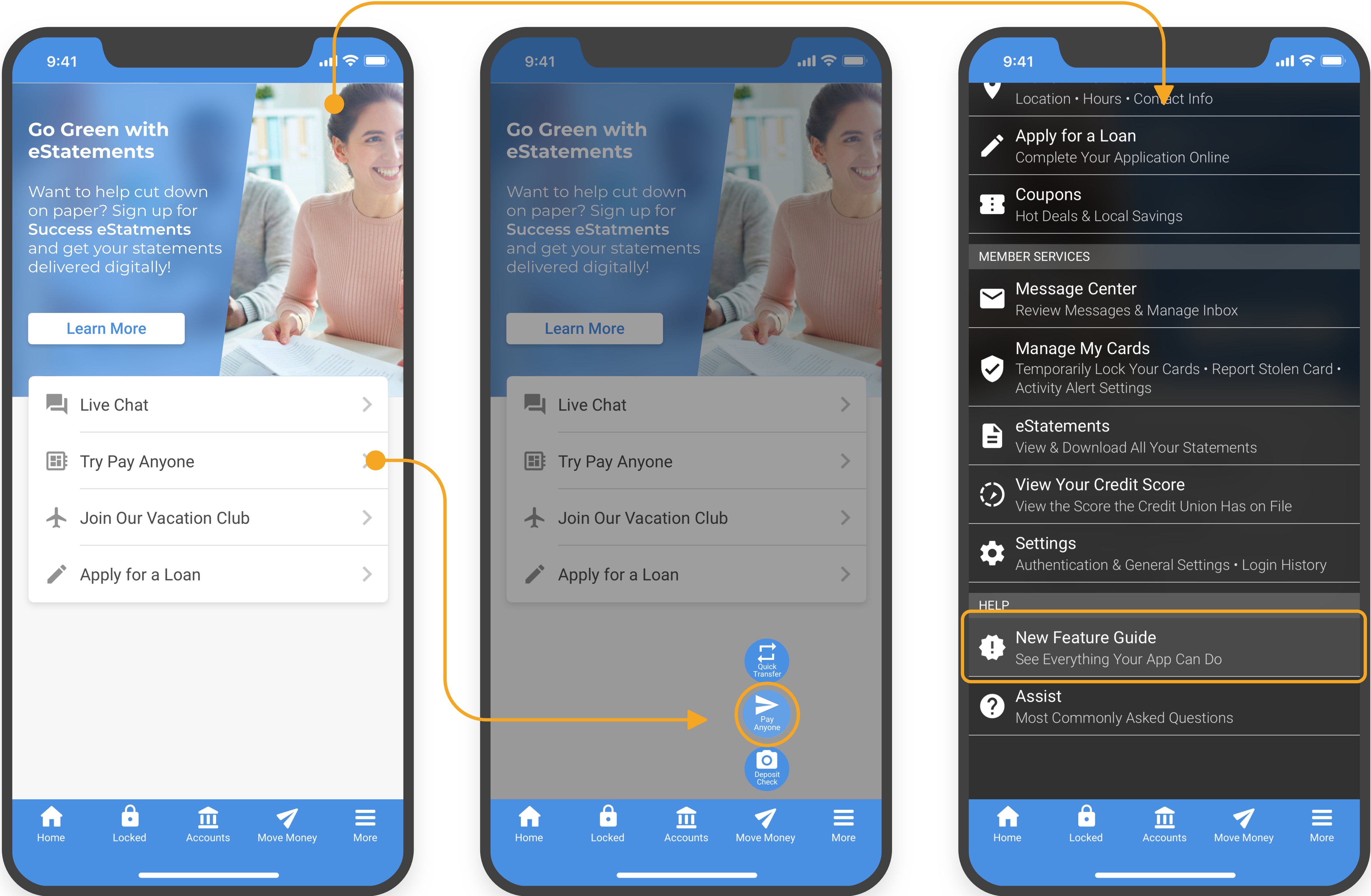


## Feature Linking (Cont.)

When a member clicks on your linked ad from the homescreen, their app will automatically open the More Menu or Move Money pucks and visually pulse which feature the member should click. This not only gets the member to the feature faster, but also helps train them for future use.

The following features are available to link to from your app's homescreen:

- Card Controls
- eStatements
- Assist
- Branch Information
- Bill Pay
- Pay Anyone
- Remote Check Deposit
- Transfer Money
- 3rd Party App Integrations





# Configuring Assist Questions

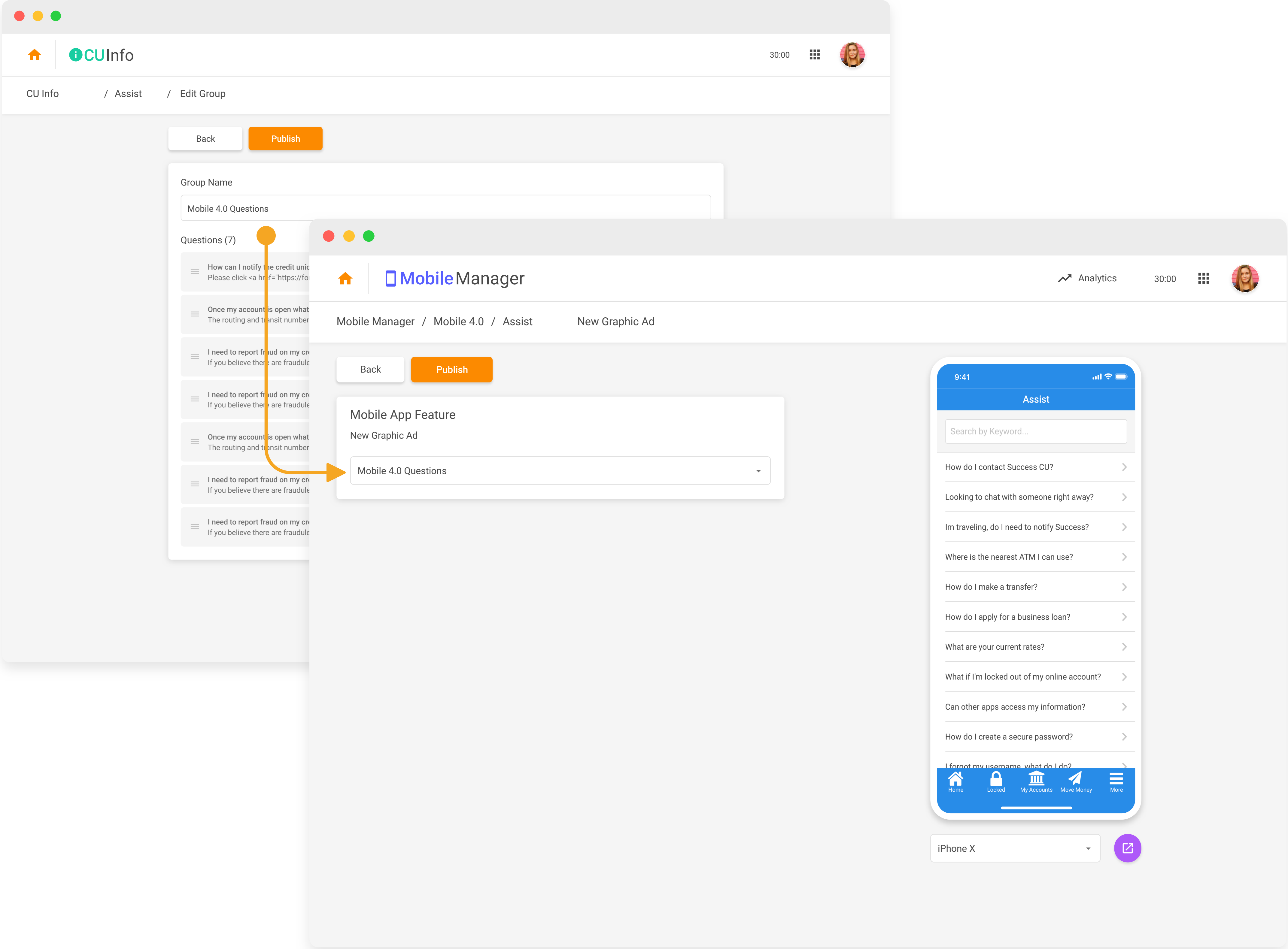
Integration with:



You can use Mobile Manager to select which Assist entries to show in your flagship apps. However, to allow your apps to have specialized lists of questions per app, they are managed in the CU Info Product.

By default, your main app will show all the Assist entries you have written. Or, using CU Info, you can create a custom group of questions pertaining to only certain topics.

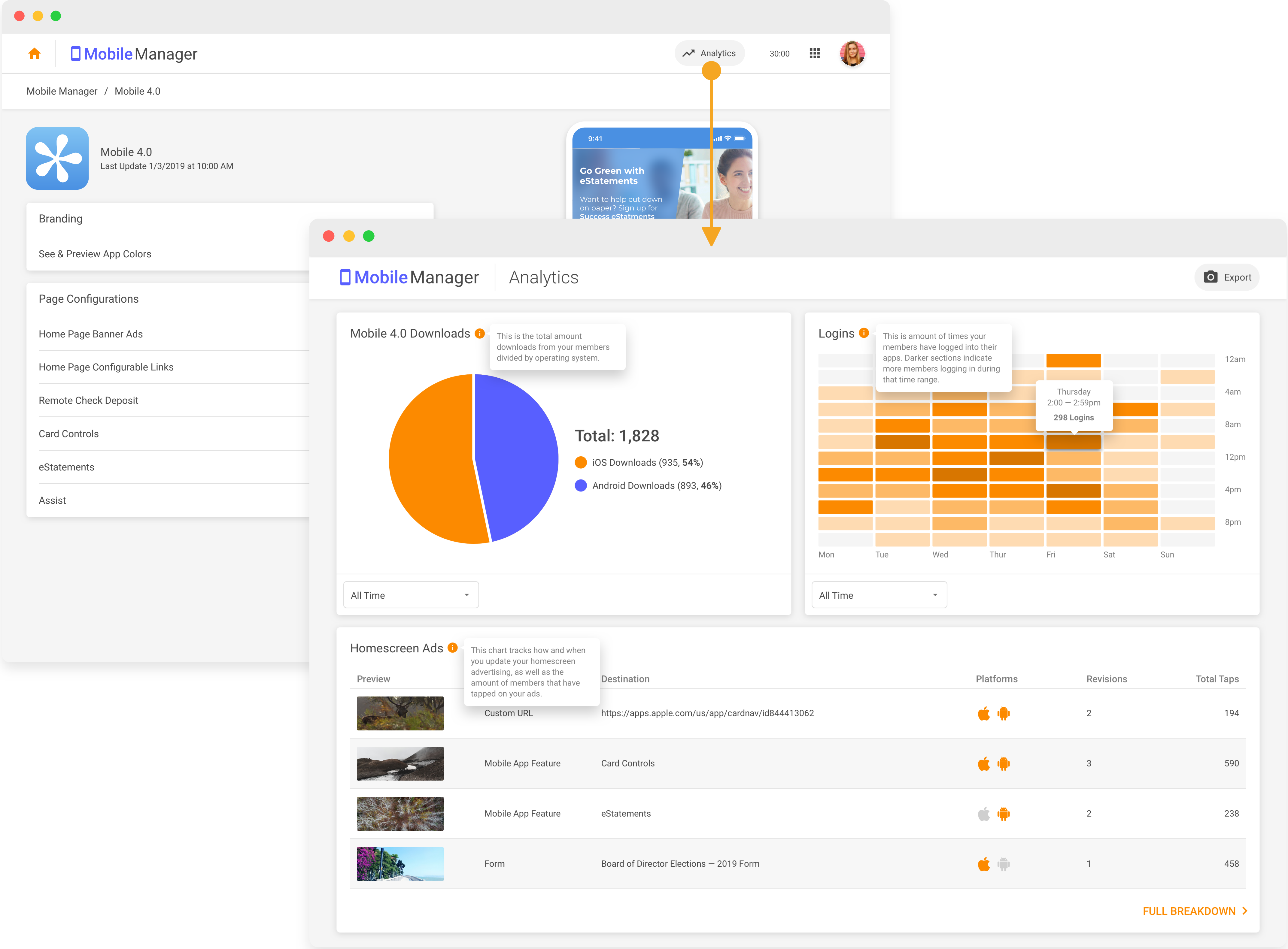
Then, in Mobile Manager, under the “Assist” configuration page, select that group of questions. They will now be the only questions to show in that app.



# Mobile Analytics

Mobile Manager also collects data about your mobile apps users and compiles it into an analytics page. You can access these analytics anytime while in Mobile Manager by clicking the Analytics Button at the top of the page.

These analytics will help you get a better idea of who is using your mobile app!



# Mobile Manager

\$50/mo

As Part of a CU Publisher Subscription

## Unlimited Team Members

You can add as many of your Credit Union team members to CU Publisher as you’s like! Team leaders can also be assigned administrator privileges, allowing them to manage who can access which products.

## Lightning Fast Editing

Any change you make to your products goes live to your members instantly! No more waiting or emailing — they’re your products on your schedule!

## Product Support Always Available

Have a question about how to use any CU Publisher product? We’re here to help! Questions can be answers by emailing **kristiandaniel@cuanswers.com**

