

Data Analysis and Warehousing

*Developing a Vision: AI*ENGAGED**

THE DATA WAREHOUSE IS GROWING UP

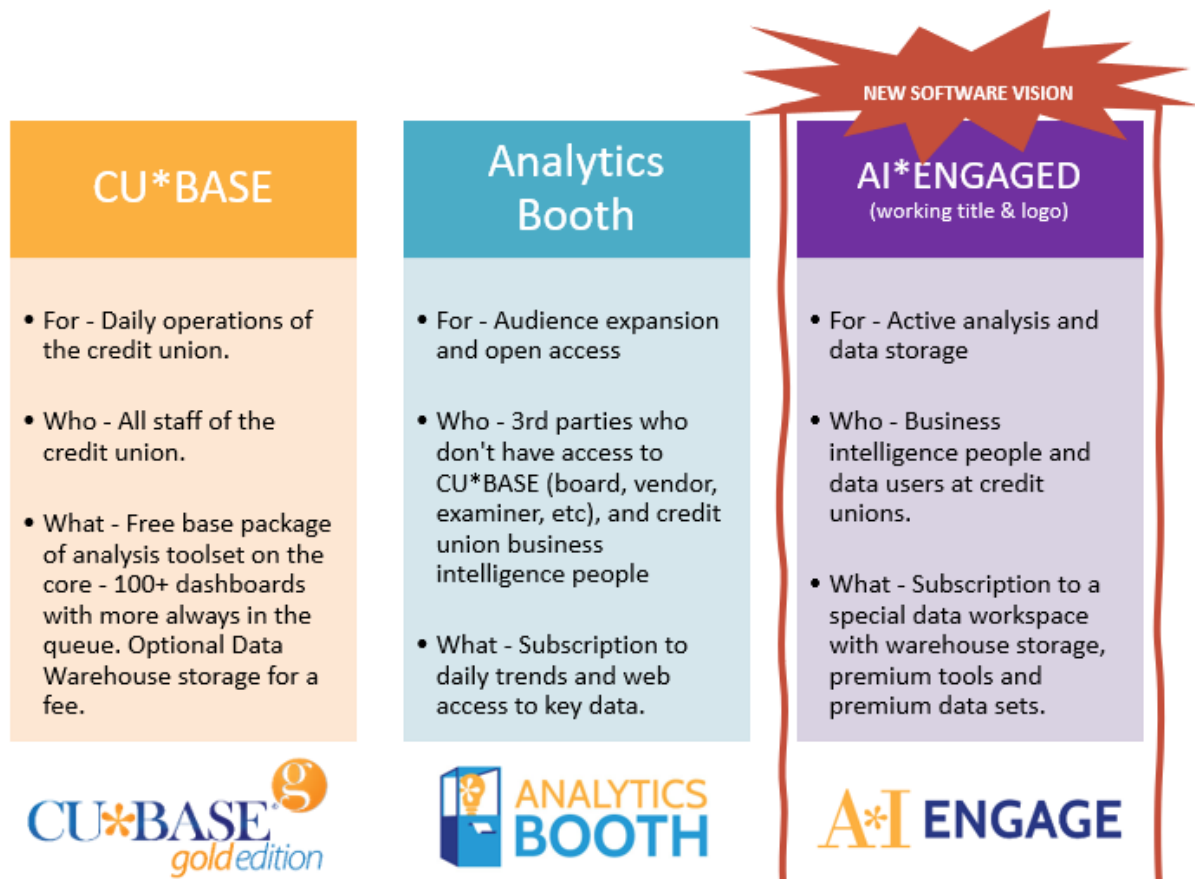
Today's Data Warehouse is a unique area in the CU*BASE core that provides value as data storage for analysis – A dedicated place for custom data, extended data history, and optional premium data from the system.

Storage was Yesterday's Focus – The capability for custom and premium data storage opens the door to new analysis projects.

A VISION FOR THE FUTURE – AI*ENGAGED*

Break away and grow into a new, separate, software copyright that will serve analysts and business intelligence people with a special data workspace for analysis – Expand from simple storage and baseline analysis tools into a full package of data storage *plus* premium data, premium tools, and more control.

A Workspace is Tomorrow's Target – The provision of a specialized suite of tools and data an analyst will use to execute and share their analytical work, *including* the Data Warehouse as we know and love it today.



*AI*ENGAGED is a working title. Remember, the brand is under construction but the vision is firm – 'A premium workspace for analysis'