
Automating Reports and Queries

Report and Query Scheduler

INTRODUCTION

The Report Scheduler allows you to select and save the filters you use to run several commonly used reports and then set these reports to be run automatically by our Operations staff on each calendar day.

Have a report with several filters that you print quite a few times a month? Even if you don't automate your reports, the Save Settings feature will still be valuable, especially for reports with many different selection options.

Do you have repetitive Queries that you run each month? Would you like to automate the process? Use the new Query Scheduler to automate the running of selected Queries on the first of the month! The Query Scheduler will run the Queries you have set to run automatically, either by building database files or by printing reports, depending on the original Query output settings.

We want to emphasize this is not a “save it and forget it” feature. Set aside time each month to review your Queries and reports to ensure that they are archiving and printing correctly.

Revision date: October 20, 2016

For an updated copy of this booklet, check out the Reference Materials page of our website:
<https://www.cuanswers.com/resources/doc/cubase-reference/>
CU*BASE® is a registered trademark of CU*Answers, Inc.

Contents

FREQUENTLY ASKED QUESTIONS	3
REPORT SCHEDULER FAQ	3
QUERY SCHEDULER FAQ	5
REPORTS SUPPORTING REPORT SCHEDULER	8
USING REPORT SCHEDULER	10
USE SHOW ME THE STEPS HELP FOR HANDY DIRECTIONS!	10
REVIEWING PRINTED AND ARCHIVED REPORTS	10
SAVING REPORT SETTINGS	10
MANUALLY PRINTING A REPORT WITH SAVED SETTINGS	13
UPDATING REPORT SETTINGS	13
DELETING REPORT SETTINGS	14
REVIEW SETTING DETAILS	14
USING THE REPORT AUTOMATION SCREEN	15
REVIEWING YOUR AUTOMATED REPORTS	16
USING QUERY SCHEDULER	17
SETTING UP A QUERY FOR QUERY SCHEDULER	17
ADDING A QUERY TO THE QUERY SCHEDULER	17
RE-SEQUENCING QUERIES THAT BUILD ON EACH OTHER	19
REMOVING A QUERY FROM AUTOMATION	20
QUERY IS DELETED FROM QUERYXX	21
REVIEWING YOUR AUTOMATED QUERIES	21
SELF PROCESSORS – RUNNING THE AUTOMATED PROCESS	22

FREQUENTLY ASKED QUESTIONS

REPORT SCHEDULER FAQ

The following section covers commonly-asked questions about Report Scheduler.

Q: When are automated reports run?

Scheduled reports are run every calendar day after beginning-of-day is run.

- Refer to page 10 for step-by-step directions on saving report settings.

Q: How do I schedule a report to run more than one time in a month?

- **A:** When you create your *scheduled* automation setting, you select the day of the month that the report will be run.

All *scheduled* reports are saved with a setting of “Monthly” so if you want a report to run on multiple days of the month, you will just need to set up multiple automation settings, one for each day you would like for it to be run.

Q: What if I want my report to always run on the last day of the month?

A: To have your automated report run on the last day of the month, enter 31 in the day field. The program will know to adjust to run on the last day of each month.

- Important Note: This report is run after beginning of day, so data from the last day of the month will not be included in the report.

Q: Can I schedule a report to print daily or weekly?

A: Currently only monthly report scheduling is supported. However, when you configure the monthly frequency, you must also select the day of the month. To have this report scheduled for another date in the same month, create an identical scheduled report entry, except this time use a different day of the month.

Q: Can I set up an automation report to run on current or end-of-month files?

A: Yes. When you create an automation setting, you will select whether to run the report using current or end-of-month files.

- NOTE: The NCUA Share Insurance report cannot be run on current files.

Q: Which reports support Report Scheduler?

A: See page 8 for a list of reports that support this feature.

Q: Should I review my automated report settings before the end of the month?

A: Yes! We want to stress that this is not a “save it and forget it” process. It is important that you review your settings before the end of the month. You may decide to adjust them slightly, or select to remove them from the automation process. Additionally, you should check to make sure that no one accidentally deleted your settings.

Q: Should I check to see that my automated reports are archiving correctly? How do I do this?

A: Yes! We want to stress that this is not a “save it and forget it” process. Set a monthly reminder to check that your reports are printing and archiving as expected.

After the automated reports processing is run, you will find the “Automated Run of Scheduled Reports – Audit Report” (PRUNAR) report in your DAILYxx OUTQ. Be sure to review this report as it lists the reports that were generated. An example of the PRUNAR report is on page 16.

Q: What settings are saved by Report Scheduler?

A: All settings are saved by the Report Scheduler, except the process date and *Export to file*. Refer to the next few questions for more information on how the process date and date ranges are handled through automation.

Q: Do I need to update the Process Date in my saved settings?

A: No, you do not need to update the process date in your saved settings. Report Scheduler will always run an automated report using data from the prior month.

Q: Do I need to update date ranges in my saved settings? How are date ranges handled by the automation process?

A: Date ranges (and single dates) in the selection criteria are saved in saved settings; however, for reports that use EOM files, when the automated report is run date ranges are replaced by the entire month range (for example 6/1 to 6/30) and single dates are replaced with a zero. The automated version of the report is simply run for the entire month. For scheduled reports that use current month files, some saved dates are ignored, while some reports require a date range to run (including but not limited to Teller Activity, Escrow Distribution, Decision Model, and Cross Sales). For those reports, the program uses the first day of the current month and then uses Proc Date as the second date.

If you retrieve the settings to run the report manually, simply update any dates or date ranges if needed prior to pressing Enter.

Q: What do I enter in the Printer ID field?

A: When selecting your settings, enter a printer ID. This will be saved when you save your settings. Where you print will depend on whether you want a printed report (enter a Printer ID), to view the report (enter HOLDxx OUTQ), or to archive the report to CU*SPY (enter MONTHxx OUTQ). If you want to view *and* archive a report, you may save multiple settings, each with something different entered in the Printer ID field.

Q: Can someone else edit or change my report settings?

A: No. An Employee ID is attached to saved settings. You cannot edit settings saved by another Employee ID, only to settings saved by your Employee ID.

Q: Can I use someone else's saved report settings with a few adjustments?

A: Yes. You can retrieve someone else's settings, make your adjustments, and save the updated settings with a new report description and your Employee ID.

Q: Who can delete saved report settings?

A: Anyone can delete anyone's saved settings. Obviously you may want to delete your own settings. Additionally, your credit union may need to delete the settings of an employee who has left your credit union. **For this reason anyone can delete saved settings of any Employee ID.** Because of this, it is a good idea to review your saved settings monthly.

Q: Can I remove a report from the automated monthly report run but still save the settings to run manually?

A: Yes. Just edit your report settings to *Not automated* and *n/a* (not *Current* or *Previous*) through the Save Settings option. Or, if you are on the Report Scheduler screen (see page 15), highlight the report listing and select "Remove from automation."

Q: What if I want to archive a report and also print a copy?

A: If you want to both print and archive a report (manually or via the automatic archive process), create two identical settings for the report, one set to archive and one set to print to a physical printer.

QUERY SCHEDULER FAQ

The following section covers commonly-asked questions about Query Scheduler.

Q: When are automated Queries run?

Scheduled Queries are run every calendar day after beginning-of-day is run.

- Refer to page 10 for step-by-step directions on saving report settings.

Q: How do I schedule a Query to run more than one time in a month?

- **A:** When you create your *scheduled* automation setting, you select the day of the month that the report will be run. If you want a Query to run on multiple days of the month, you will just need to set up multiple automation settings, one for each day you would like for it to be run.

Q: What if I want my report to always run on the last day of the month?

A: To have your automated Query run on the last day of the month, enter 31 in the day field. The program will know to adjust to the last day of each month.

Q: Can I schedule a report to print daily or weekly?

A: Currently only monthly Query scheduling is supported. When you schedule the Query, you must select the day of the month it will be run. To have this Query scheduled for another date in the same month, create an identical scheduled Query entry, except this time use a different day of the month.

Q: Should I check to see that my automated Queries are running correctly?

A: Yes! We want to stress that this is not a “save it and forget it” process. Set a monthly reminder to check that your Queries are running as expected.

Once the automated Queries are run, the “Automated Run of Scheduled Queries – Audit Report” (PRUNAQ) will appear in your DAILYxx OUTQ. Be sure to review this report. An example of the PRUNAQ report is on page 21.

Q: What if my Query includes end-of-month files?

A: When creating the Queries for the Query Scheduler, it is very important that you use only **current month files**. When you set up the automation process, CU*BASE allows you to indicate whether you would like the Scheduler to automatically substitute the proper file name to pull from the most recent month-end.

Query Scheduler will not work properly if end-of-month file names are used in the original Query saved in your QUERYxx library. You may need to set up separate Queries to be used only by the Query Scheduler.

Q: What other tips are there for creating Queries for use with Query Scheduler?

A: As mentioned above, Queries used in Query Scheduler cannot contain end-of-month files. Additionally, if you are using output option *Database file* (3) be sure to set the *Data in file* option to *Replace File* (2) or for Queries that build on each other, use *Add to Member* (5). Make sure the

Authority of your Queries is set to “*ALL.” Finally, always be sure to run the Query first to generate a database file before using it in the Query Scheduler.

Q: How do I print a report generated from a Query to a physical printer or an OUTQ?

A: When selecting your Query output, use output option *Printer* (2) and enter a printer ID. Where you print will depend on whether you want a printed report (enter a Printer ID), to view the report (enter HOLDxx OUTQ), or to archive the report to CU*SPY (enter MONTHxx OUTQ). If you want to view *and* archive a report, you may have multiple Queries, each with a different output option for the report.

Q: Can I schedule a series of Queries that are dependent on each other with the Query scheduler?

A: Yes. The Query scheduler runs the Queries in the order they appear on the screen. To run Queries that build on each other, simply enter them sequentially. For information on re-sequencing the Queries, refer to page 19.

Q: If I alter a Query, do I need to also update it in the Query Scheduler?

A: If a Query is updated, it automatically refreshes in the Query Scheduler. If a file has been added and you need to use the month-end file, you will need edit the query on the Query Scheduler screen and designate this selection for the new file.

Q: What happens if a Query is deleted from QUERYxx? What happens in the Query Scheduler?

A: If a Query is deleted from QUERYxx, this will be indicated on the screen by “**NOT FOUND**.”

Q: If you remove the Query from automation, is it removed from QUERYxx?

A: No, removing a Query from automation does not delete the Query from QUERYxx.

REPORTS SUPPORTING REPORT SCHEDULER

The following list includes reports that currently support the report scheduler feature.

Reports Supporting the Automation Feature	Access Point
Check Register Report	Check Processing (MNACCK)
Print Collections Delinquency	Collections Processing (MNCOLL)
Loan Delinquency Analysis	Collections Processing (MNCOLL) or Reports D (MNRPTD)
Escrow Disbursement Report	Extended Loan Processing (MNEXLN)
Investment Maturity Report	Investments (MNINVS)
List Teller Activity Analysis Report	Teller & Cash Analysis Tools (MNHTLA) and Reports D (MNRPTD)
Print PLI Analysis by Loan	Participation Loan Processing (MNPART)
PLI – Participation Loan Trial Balance Report	Participation Loan Processing (MNPART)
PLI – Delinquency Report	Participation Loan Processing (MNPART)
Rural Development Loan Detail Report	Participation Loan Processing (MNPART)
Trial Balance Select Information	Reports B (MNRPTB)
Cross Sales Analysis	Member Tracker Tools (MNTRAK)
Member Name & Address Listing	Reports B (MNRPTB)
Member Transaction Override Report	Reports B (MNRPTB) or Member Account Adjustment Tools (MNADJ)
New Membership Report	Reports B (MNRPTB)
New Member Account Report	Reports B (MNRPTB)
Non-Transaction Override Report	Reports B (MNRPTB) or Member Account Adjustment Tools (MNADJ)
Closed Membership Report	Reports B (MNRPTB)
Closed Member Account Report	Reports B (MNRPTB)
Member File Maintenance Report	Reports B (MNRPTB)
Certificate of Deposit Detail Report	Reports B (MNRPTB)
G/L Trial Balance	Reports C (MNRPTC) or General Ledger (MNGELE)
General Transaction Register	Reports C (MNRPTC)
Member Account Adjustments	Reports C (MNRPTC) or Member Account Adjustment Tools (MNADJ)
Investment Trial Balance	Reports C (MNRPTC)
Fixed Asset Trial Balance Report	Reports C (MNRPTC)
Share Certificate Accrued Dividend	Reports C (MNRPTC)

Report	
Loan Purpose Analysis	Reports D (MNRPTD)
Loan Security Code Analysis	Reports D (MNRPTD)
Loan Interest Analysis	Reports D (MNRPTD)
CD Maturity Analysis	Reports D (MNRPTD)
Contingent Liability Analysis	Reports D (MNRPTD)
Selective Loan Information Report	Reports E (MNRPTE)
New/Refinanced Loan History	Reports E (MNRPTE)
Decision Model Performance Report	Reports E (MNRPTE)
IRA Contrib. & Fair Market Value	Reports F (MNRPTF)
Teller Activity Report	Vault Control (MNHTEL) and Reports D (MNRPTD)
NCUA Share Insurance Reports <ul style="list-style-type: none"> • NOTE: Automated settings for this report cannot be run on current month files. 	Reports D (MNRPTD)

USING REPORT SCHEDULER

Refer to the FAQ section for Report Scheduler for tips about Report Scheduler. See page 3.

USE SHOW ME THE STEPS HELP FOR HANDY DIRECTIONS!

Also check out these directions in the Show Me the Steps online help.

Create Report Automation Setting

http://help.cubase.org/steps/steps.htm#Create_Report_Automation_Setting.htm

Change Report Automation Setting

http://help.cubase.org/steps/steps.htm#Change_Report_Automation_Setting.htm

Remove Report from Automation

http://help.cubase.org/steps/steps.htm#Remove_Report_from_Automation.htm

Delete Report from Automation

http://help.cubase.org/steps/steps.htm#Delete_Report_from_Automation.htm

REVIEWING PRINTED AND ARCHIVED REPORTS

We want to stress that this is not a “save it and forget it” process. Set a monthly reminder to check that your reports are printing and archiving as expected.

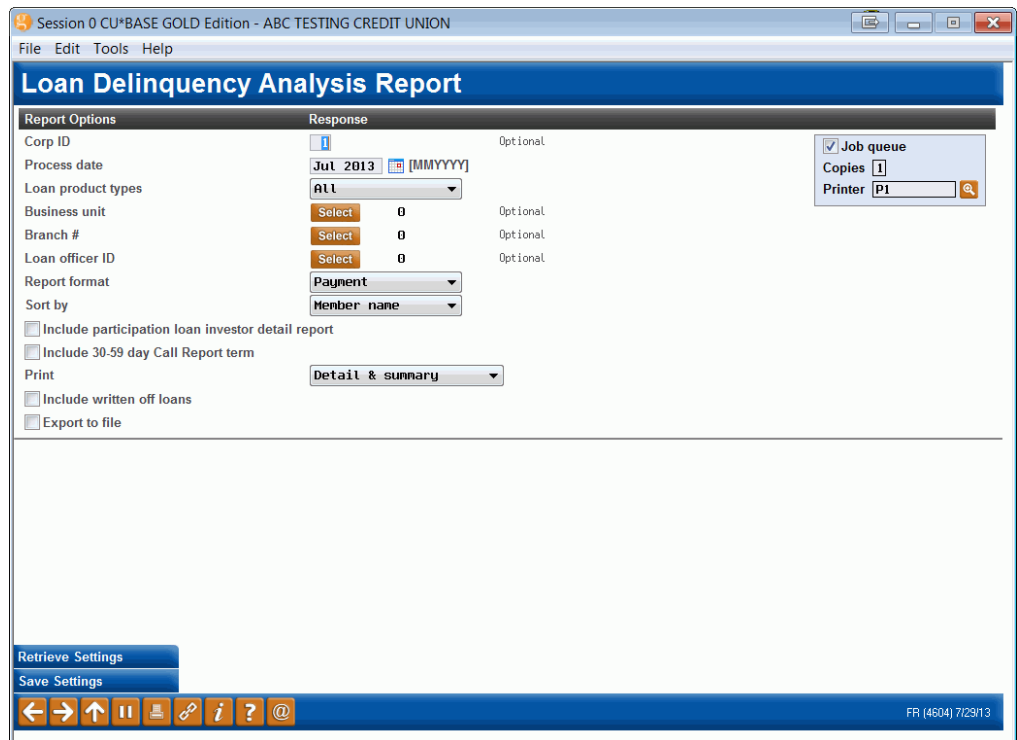
SAVING REPORT SETTINGS

Also check out the directions in the Show Me the Steps online help:

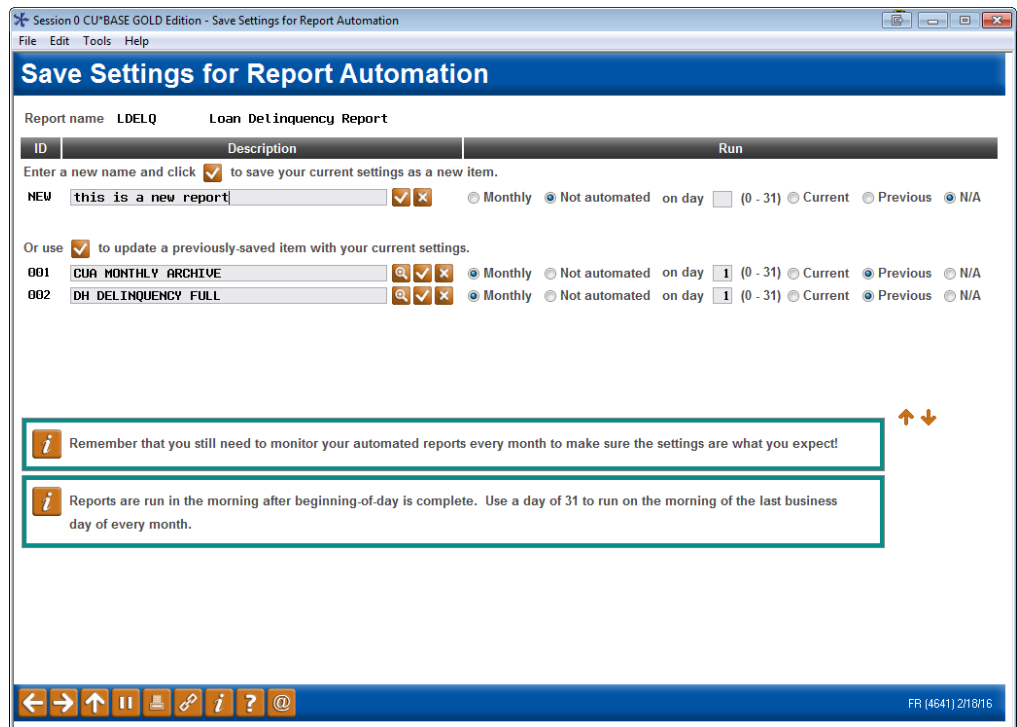
http://help.cubase.org/steps/steps.htm#Create_Report_Automation_Setting.htm

We want to stress that this is not a “save it and forget it” process. It is important to review your settings prior to the end of the month. You may decide to adjust them slightly, or select to remove them from the automation process. Additionally, you should check to make sure that no one accidentally deleted your settings.

- NOTE: You can also save settings from the Automated Reports Scheduler screen. See page 15.
1. Navigate to the report selection screen and select your filters and printer ID on the selection screen of a report that supports Report Scheduler.
 - See page 4 for information about how the Process date and date ranges (and single dates) are handled by saved settings.
 - See page 8 for a listing of reports that currently support this feature.



2. To save your report settings, use *Save Settings* (F24) on reports that support automated scheduling).
 - **NOTE: For reports with multiple selection screens, *Save Settings* will appear on the last selection screen.**
3. Enter the description for your settings.
 - We recommend adding your name or other identifier to your saved settings; it will be important later to differentiate, for example, the CEO's favorite settings from those used by someone on the accounting team.
 - NOTE: Do not use the Description "CUA Monthly Archive." This name is reserved for reports that were previously run by Operation staff.



4. Then indicate whether you want this report to be *Monthly* or “*Not automated*.”
 - Select *Monthly* if you want this report to be included in the Report Scheduler feature. When report automation is run this report will be printed or archived depending on your saved settings.

If you select *Monthly*, you must also select the day of the month (0-31) when the automation setting will be run. For the last day of the month enter 31.

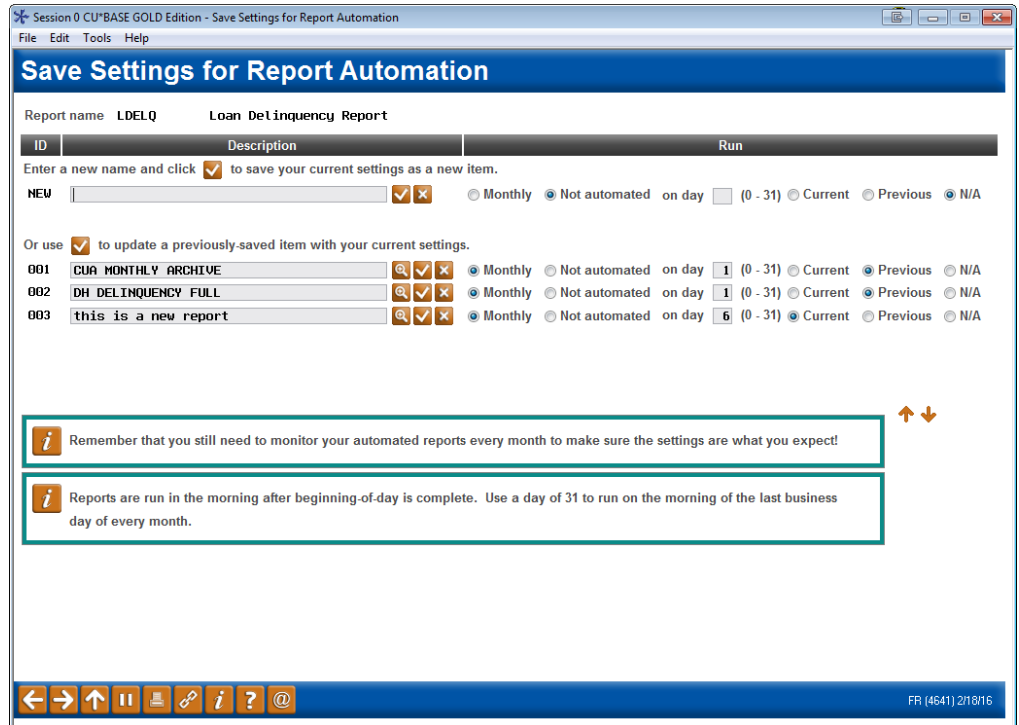
- Refer to the Report Scheduler section of the Frequently-Asked Questions section (page 3) for more detailed information on the selection of a day and for special circumstances related to the selection of a day.

If you select *Monthly*, also select whether to run the report on *Current* or *Previous* month files.

- Select *Not automated* if you do not want to include this report in the monthly automation process. (In this case you do not select current month files or a day of the month.)
- NOTE: You can run a report manually at any time of the month with any saved settings (monthly or not automated).
- If you are moving a report setting from being automated to a manual setting, use the *n/a* selection instead of *Current* or *Previous*.
- NOTE: If you want to both print and archive a report (manually or via the automatic archive process), create two identical settings

for the report, one set to archive and one set to print to a physical printer.

5. Once you have named the settings, click the checkmark button to save them. Your saved settings will move to the lower part of the screen.



MANUALLY PRINTING A REPORT WITH SAVED SETTINGS

You can retrieve your settings to run a report manually at any time of the month.

While on the report selection screen, use *Retrieve Settings* (F23) to select from a list of saved settings to populate the filters, including printer settings. Review your settings. Press Enter to run the report.

- NOTE: You can also retrieve settings from the Automated Reports Scheduler screen. See page 15.

UPDATING REPORT SETTINGS

Also check out the directions in the Show Me the Steps online help:

http://help.cubase.org/steps/steps.htm#Change_Report_Automation_Setting.htm

If you want to update existing saved settings that you created earlier (under your Employee ID), first retrieve the report settings you wish to alter and update the selections as desired. When you save the settings using F24-Save Settings, click the checkmark next to the same description of the settings you retrieved. This allows you to update settings but keep the same description.

You can only adjust the saved settings created by your Employee ID. If you want to use someone else's settings and make adjustments, retrieve the

saved settings using *Retrieve Settings* (F23), make the changes, and save the settings with a new description.

- NOTE: You can also retrieve and save settings from the Automated Reports Scheduler screen. See page 15.

DELETING REPORT SETTINGS

Also check out the directions in the Show Me the Steps Online help:

http://help.cubase.org/steps/steps.htm#Delete_Report_from_Automation.htm

To delete settings, move to the Save Settings screen. Then click the X next to that description. A confirmation screen will appear. Click to confirm the deletion of the settings.

Warning: You can delete any saved settings, even those created by another Employee ID. Obviously you may want to delete your own settings. Additionally, your credit union may need to delete the settings of an employee who has left your credit union.

- NOTE: You can also delete settings from the Automated Reports Scheduler screen. See page 15.

REVIEW SETTING DETAILS

While on the report selection screen, use *Retrieve Settings* (F23). Then use the lookup icon to review a view-only version of information about the report settings such as who created it, the last time the report was saved, and the last time it was run with these settings using the automated processing.

USING THE REPORT AUTOMATION SCREEN

Also check out the directions in the Show Me the Steps online help:

http://help.cubase.org/steps/steps.htm#Create_Report_Automation_Setting.htm

You can view reports that support the automated feature, view your saved filters, and save new filters directly from the Report Automation listing screen (shown below). This listing is accessed via **Standard Reports** on the Configuration Functions (MNCNFX) menu

- Because this gives access to all of your saved report settings, you may wish to restrict access to this screen.

Report	Description	Saved Report Settings	To Be Run	Data To Use
LCDDV	Certificate Dividend Accrual	***NONE SAVED**		
LCKTBS	Print Check Register	001 testing	MONTHLY ON THE 2ND	CURRENT
LCKTBS	Print Check Register	002 saved as pl	NOT AUTOMATED	
LCLAC	Closed Account List	001 CUA MONTHLY ARCHIVE	MONTHLY ON THE 1ST	PREVIOUS EDM DATA
LCLAC	Closed Account List	002 FANNIE PAID OFF LOANS	NOT AUTOMATED	
LCLAC	Closed Account List	003 FREDDIE PAID OFF LOANS	MONTHLY ON THE 4TH	PREVIOUS EDM DATA
LCLMB	Closed Member List	001 CUA MONTHLY ARCHIVE	MONTHLY ON THE 1ST	PREVIOUS EDM DATA
LCLMB	Closed Member List	002 DH CLOSED MEMBERSHIP FOR CINDRICH	MONTHLY ON THE 7TH	PREVIOUS EDM DATA
LDELQ	Loan Delinquency Report	001 CUA MONTHLY ARCHIVE	MONTHLY ON THE 1ST	PREVIOUS EDM DATA
LDELQ	Loan Delinquency Report	002 DH DELINQUENCY FULL	MONTHLY ON THE 15TH	CURRENT
LDELQ	Loan Delinquency Report	003 this is a new report	MONTHLY ON THE 6TH	CURRENT
LDELQ	Loan Delinquency Report	004 this is a new report2	NOT AUTOMATED	
LDMPF	Decision Model Performance Re	***NONE SAVED**		
LDQAN	Loan Delinquency Analysis Rep	001 CUA MONTHLY ARCHIVE	MONTHLY ON THE 1ST	PREVIOUS EDM DATA
LDQAN	Loan Delinquency Analysis Rep	002 DH DELINQUENCY 2 MONTHS AND UP	MONTHLY ON THE 21ST	CURRENT
LESCD	Escrow Disbursement Report	***NONE SAVED**		
LFMLOG	CUFS File Maintenance Report	001 SRS 9E LELOG REPORT	MONTHLY ON THE 25TH	CURRENT
LFMLOG	CUFS File Maintenance Report	002 SRS 9H LELOG REPORT	MONTHLY ON THE 10TH	PREVIOUS EDM DATA
LFMLOG	CUFS File Maintenance Report	003 SRS 9F LELOG REPORT	MONTHLY ON THE 2ND	PREVIOUS EDM DATA
LGLTBB	General Ledger Trial Balance	001 CUA MONTHLY ARCHIVE	LAST DAY OF THE MONTH	PREVIOUS EDM DATA
LGLTBB	General Ledger Trial Balance	002 CASH LETTER ADJ 80105 MONTHLY	NOT AUTOMATED	
LINMTS	Investments - Maturity Report	***NONE SAVED**		
LINTB	Investment Trial Balance	***NONE SAVED**		
LIRACT	IRA Activity Report	001 CUA MONTHLY ARCHIVE	MONTHLY ON THE 1ST	PREVIOUS EDM DATA
LLNIA	Loan Interest Analysis	001 CUA MONTHLY ARCHIVE	MONTHLY ON THE 1ST	PREVIOUS EDM DATA
LLNSC	Loan Security Analysis	001 CUA MONTHLY ARCHIVE	MONTHLY ON THE 1ST	PREVIOUS EDM DATA
LLNTP	Loan Purpose Analysis	001 CUA MONTHLY ARCHIVE	MONTHLY ON THE 1ST	PREVIOUS EDM DATA
LLNTP	Loan Purpose Analysis	002 DH LOAN PURPOSE ANALYSIS	MONTHLY ON THE 1ST	PREVIOUS EDM DATA
LMBRN	Member Name and Address List	001 CUA MONTHLY ARCHIVE	MONTHLY ON THE 1ST	PREVIOUS EDM DATA
LMBRT	Member Trial Balance Selectio	001 CUA MONTHLY ARCHIVE	MONTHLY ON THE 1ST	PREVIOUS EDM DATA
LMTCD	Share Certificate Maturity Re	***NONE SAVED**		
LMTLN	Loan Maturity Analysis	***NONE SAVED**		
LNDP	New/Refinanced Loan History	001 CUA MONTHLY ARCHIVE	MONTHLY ON THE 1ST	PREVIOUS EDM DATA

From this screen, select a report setting or a report and one of the following settings:

- **Add New Settings:** Select this to update or create new settings for a report.
- **Remove from automation:** Select this to change the report run option from “monthly” to “not automated.” The report settings will not be deleted.
- **Delete Settings:** Select this to completely delete the report settings.
- **Retrieve settings:** Select this to review settings, update settings, or to run the report with these settings.

REVIEWING YOUR AUTOMATED REPORTS

After the scheduled reports are run, you can refer to your DAILYxx OUTQ for the “Automated Run of Scheduled Reports – Audit Report” (PRUNAR) – shown below for a list of reports run by the Report Scheduler.

They are listed by report name and the Description used to define the saved settings.

- In the example below, the reports designated as “CUA MONTHLY ARCHIVE” were created by Operations staff for the credit union.

REPORT NAME	DESCRIPTION	LAST RUN DATE	INFORMATION	PAGE USER
LCLAC	001 CUA MONTHLY ARCHIVE	2/01/2016		
LCLMB	001 CUA MONTHLY ARCHIVE	2/01/2016		
LDELQ	001 CUA MONTHLY ARCHIVE	2/01/2016		
LDQAN	001 CUA MONTHLY ARCHIVE	2/01/2016		
LFMLOG	001 PROGRAM UNMADR	2/01/2016		
LGLETB	001 CUA MONTHLY ARCHIVE	2/01/2016		
LINTB	001 BY PURCHASE DATE	2/01/2016		
LIRACT	001 CUA MONTHLY ARCHIVE	2/01/2016		
LLNIA	001 CUA MONTHLY ARCHIVE	2/01/2016		
LLNSC	001 CUA MONTHLY ARCHIVE	2/01/2016		
LLNTP	001 CUA MONTHLY ARCHIVE	2/01/2016		
LLNTP	002 Mortgage Loans	2/01/2016		
LLNTP	003 Auto Loans	2/01/2016		
LMBRN	001 CUA MONTHLY ARCHIVE	2/01/2016		
LBRT	001 CUA MONTHLY ARCHIVE	2/01/2016		
LMTCD	001 IRA CDs ONLY	2/01/2016		

As these reports are run daily, they are also archived daily to the Miscellaneous category in CU*SPY.

USING QUERY SCHEDULER

SETTING UP A QUERY FOR QUERY SCHEDULER

Refer to the FAQ section for Query Scheduler for tips on setting up your Queries for Query Scheduler. See page 5.

ADDING A QUERY TO THE QUERY SCHEDULER

It is very easy to add a Query to the Query scheduler. This process is done directly from the Report Automation: Custom Reports Files screen.

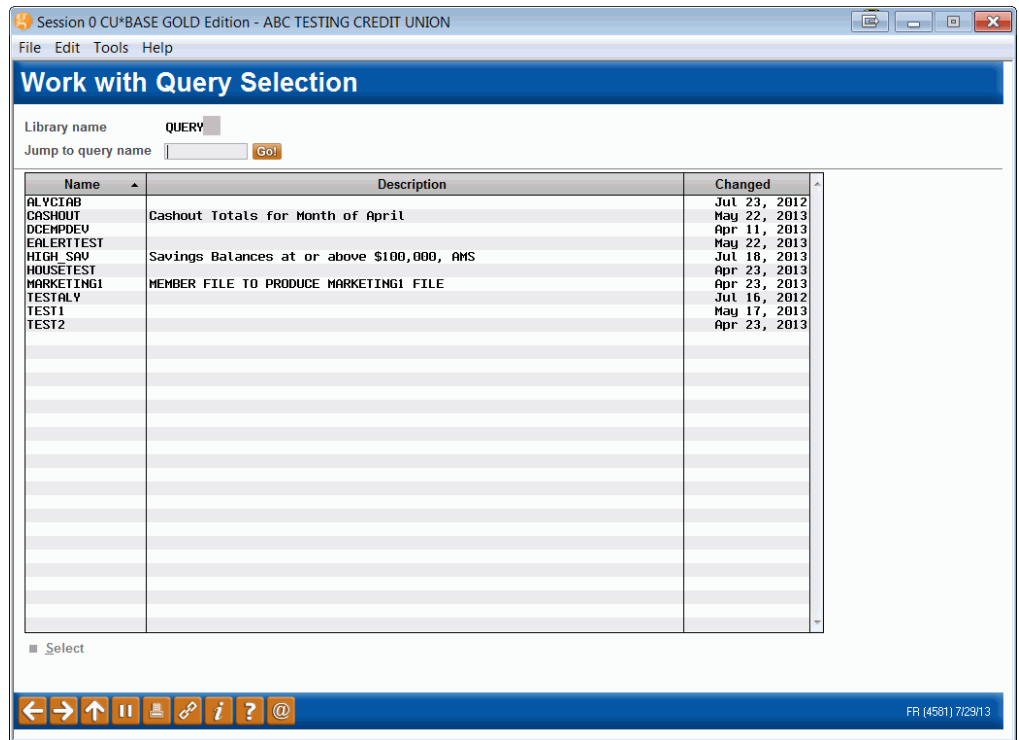
1. Use **Custom (Query) Reports/Files** on the Configuration Functions (MNCNFX) menu
2. You will view a listing of the Queries that are currently included in the Query scheduler.

The screenshot shows a software window titled "Session 0 CU*BASE GOLD Edition - ABC CREDIT UNION" with a menu bar (File, Edit, Tools, Help). The main area is titled "Report Automation: Custom Reports/Files" and contains a table with two main sections: "Automation Scheduler" and "Custom Report Definition".

Automation Scheduler						Custom Report Definition			
Name	Seq	Run Day	Modified	By	Last Run	Description	Created By	Modified	
CHARGEDEF2	010	01	8/24/15	+1	5/01/15	Test CHARGEDEF2	DONAL DP	3/02/15	
ZEROBALX	020	02	3/26/13	05	5/01/15	Test ZEROBALX	DONAL DP	3/02/15	
EXTDELX	030	03	3/26/13	05	5/01/15	Test EXTDELX	DONAL DP	3/02/15	
TDR6X	040	04	3/26/13	05	5/01/15	Test TDR6X	DONAL DP	3/02/15	
A_VTS_10	050	15	8/24/15	+1			PHILLIPP	8/24/15	

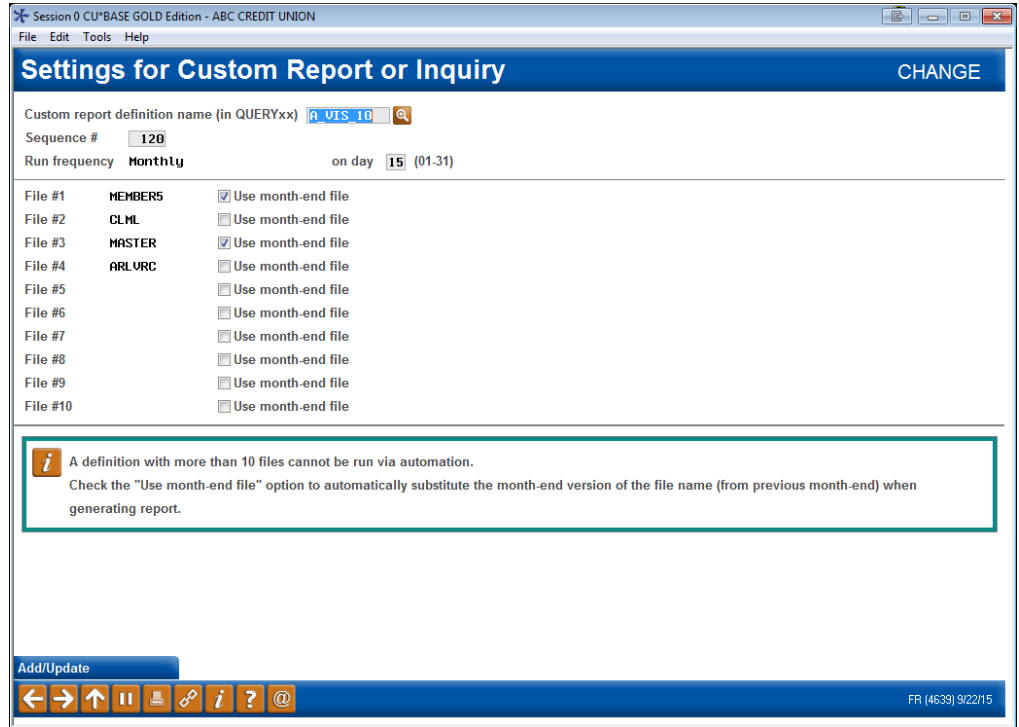
Below the table are three buttons: "Edit", "Remove from automation", and "View". There are also up and down arrow icons. At the bottom left, there are buttons for "Add New" and "Resequence". At the bottom right, there is a status bar with the text "FR (4630) 9/22/15".

3. Use *Add New* (F6) to add a new Query.
4. Use the lookup next to the “Custom report definition name (in QUERYxx).” This will show you a listing of the Queries currently in QUERYxx.
 - This step is recommended. The Query name will be brought into the screen, and the files will be populated.



5. Select the Query from the list and use *Select* to return to the previous screen.

6. The files of the Query will be populated. Enter the day of the month on which you want this Query to be run in the *on day* field. (Enter 31 to have the Query run on the last day of the month.) If an end-of-month file is needed, check *Use month-end file*.
 - Refer to the Query Scheduler section of the Frequently-Asked Questions section (page 5) for more detailed information on the selection of a day and for special circumstances related to the selection of a day.



7. Use *Add/Update* (F5) to add the Query to the Query Scheduler.
8. The new Query is added to the scheduler.

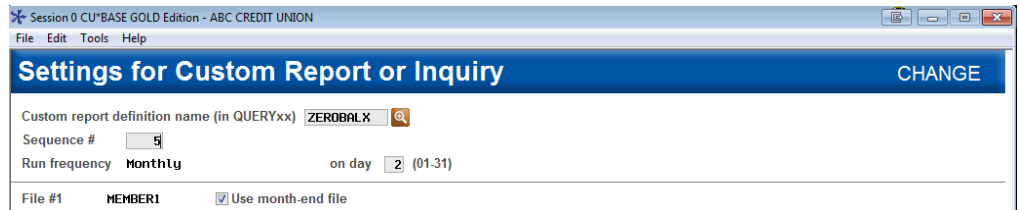
RE-SEQUENCING QUERIES THAT BUILD ON EACH OTHER

The Query scheduler runs the Queries in the order they appear on the screen. To run Queries that build on each other, simply enter them sequentially.

To re-sequence Queries, follow this process:

Automation Scheduler						Custom Report Definition		
Name	Seq	Run Day	Modified	By	Last Run	Description	Created By	Modified
CHARGEOFF2	010	01	8/24/15	+1	5/01/15	Test CHARGEOFF2	DONALDP	3/02/15
ZEROBALX	020	02	3/26/13	05	5/01/15	Test ZEROBALX	DONALDP	3/02/15

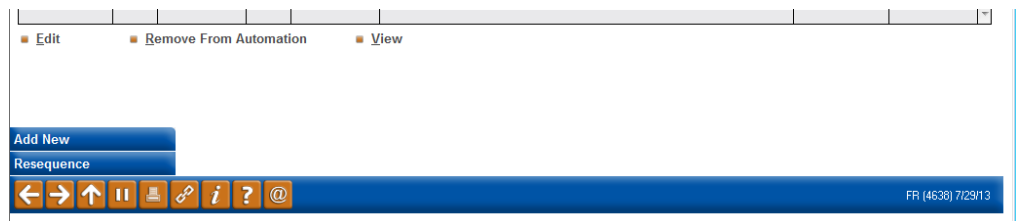
1. If you add the Queries out of order sequentially, select the Query and *Edit*.
2. Enter a new number in the *Sequence #* field.



3. Then use *Add/Update* (F5).
4. You can then use *Resequence* (F20) to change the numbering to be by increments of ten. (This will be refreshed when you exit and re-enter the screen.)

REMOVING A QUERY FROM AUTOMATION

To remove a Query from the Query scheduler, simply select the Query and then “Remove from Automation.” This will not delete the Query from QUERYxx, it will simply remove it from automated processing.



QUERY IS DELETED FROM QUERYXX

If a Query is removed from QUERYxx, the Query Scheduler will indicate that the Description of the Query is “**Not Found**.” (See below.)

Automation Scheduler						Custom Report Definition		
Name	Seq	Run Day	Modified	By	Last Run	Description	Created By	Modified
CHARGEOFF2	010	01	4/27/16		2/01/16	Test CHARGEOFF2		2/06/16
STUMOEND	020	01	3/26/13		2/01/16	**NOT FOUND**		

REVIEWING YOUR AUTOMATED QUERIES

After the scheduled Queries are run, you can refer to your DAILYxx OUTQ for the “Automated Run of Scheduled Queries – Audit Report” (PRUNAQ) – shown below for a list of Queries run by the Query Scheduler.

The Queries are listed by Query name and indicate whether the Query generated a report without a printer undefined.

- The reports with a printer ID of *PRINT are considered exceptions and are archived to the HOLDxx OUTQ. This is indicated in the Exceptions column. From here they can either be printed or archived.

Items that are not Exceptions built database files or output to a specific printer ID.

QUERY NAME	FREQUENCY	SEQUENCE	LAST RUN DATE	EXCEPTIONS
HAM5	M	010	2/01/2016	
HAM6	M	020	2/01/2016	
ALLOANS	M	030	2/01/2016	Printer name not configured. Report placed in HOLDAB outq
CREDIT	M	040	2/01/2016	Printer name not configured. Report placed in HOLDAB outq
LNAPHA	M	050	2/01/2016	
NLNAPHA	M	060	2/01/2016	
LNAPPSALL	M	070	2/01/2016	Printer name not configured. Report placed in HOLDAB outq
HAMASTER	M	080	2/01/2016	
ONLYM6	M	120	2/01/2016	
TRACKERHA	M	130	2/01/2016	
TRACKER1	M	140	2/01/2016	
TRACKER2	M	150	2/01/2016	
TRACKER	M	160	2/01/2016	Printer name not configured. Report placed in HOLDAB outq

Each day the PRUNAQ report (shown above) is archived to CU*SPY in the Miscellaneous category.

SELF PROCESSORS – RUNNING THE AUTOMATED PROCESS

For online credit unions, the automated process will be each calendar day by our Operations staff. Self Processors, however, will need select to run the process themselves. Self Processors can select to run this after End-of-Day, or at any time they want to run the automated Queries and reports.

OPER #7, #27-Run Automated Reports and Queries

The screenshot shows a window titled "Session 0 CU*BASE GOLD Edition - Process Automated Reports and Queries". In the top right corner, there is a logo for "CU*BASE operator edition". The interface includes a "Job queue" section with a checked checkbox, a "Copies" field set to "1", and a "Printer" field set to "P1" with a search icon. Below this is a "Report Options" section with two checked checkboxes: "Run reports configured for automation" and "Run queries configured for automation". At the bottom of the main area, there is a red "Exit" button and a green "Process Now" button. A toolbar at the very bottom contains navigation icons (back, forward, up, pause, print, copy, info, help, and refresh) and the text "FR (4634)".

Select whether to run automated reports or Queries (or both) that are configured for automation by checking the appropriate boxes. (Both boxes are checked by default). Then press Enter to run all of the automated Queries and automated reports (depending on your selection).