

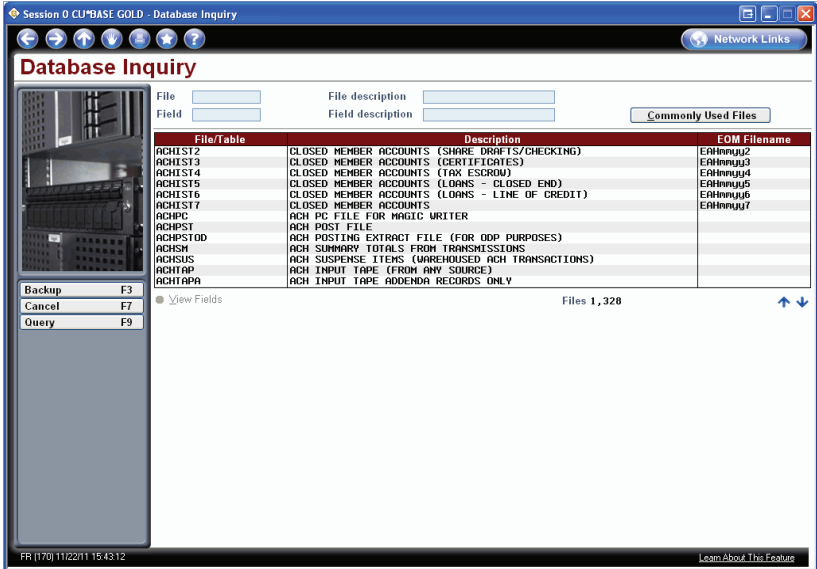
3

Documentation: Tricks of the Trade

Report Builder: Canned Queries and Files

TIP #1: How Do I Find the Name of the End-of-Month File?

Not sure what End-of-Month file to use in your Query? The Database Inquiry screen, accessed via the Report Builder menu (MNQUERY) #2-Search for File and Fields, now includes not only current month filenames but also the corresponding End-of-Month filenames (where applicable) as well!



Use the Database Inquiry screen to view the End-of-Month filenames.

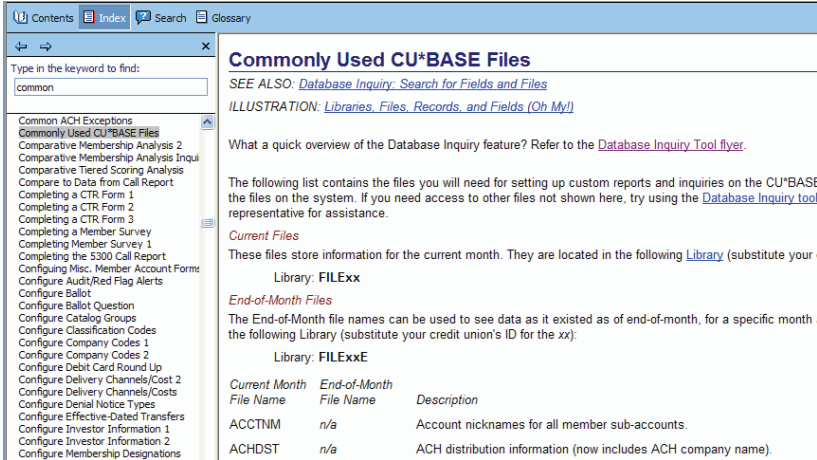
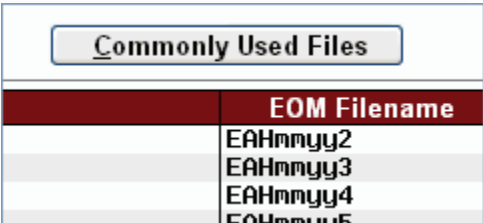
TIP #2: How Do I Access a Listing of Commonly-Used Files from this Screen?

Want to learn more about the most frequently-used files? Click on the “Commonly Used Files” button on the Database Inquiry screen to access the “Commonly Used CU*BASE Files” help topic in the CU*BASE Online Help.

TIP #3: How Can I Access the “Commonly-Used CU*BASE Files” Topic While in Help?

You can also access the “Commonly-Used CU*BASE Files” topic while in CU*BASE Online help by using Index Keywords “Commonly Used CU*BASE Files.”

Click the “Commonly Used Files” button to view a description of many frequently-used files in CU*BASE.



Use Index Keywords “Commonly Used CU*BASE Files” while in CU*BASE online help.

TIP #4: Where Can I Find Help on Canned Queries?

The Online Banking Detail Statistics tool uses IBM Query to produce a display of ARU Statistics.

SEE ALSO: [Audio Response/Online Banking Statistical Report](#)
[I am working with a Query report that uses the AUDICC file. What are the va \(i.e. online banking\)](#)

Specifications
File(s) used by this Query: AUDICC, MASTER
Access: MNMISC
The list will be sorted in descending order by date, with subtotals for each date by I Online Banking via Internet access

Sample Conditions
Following are some sample conditions which could be used when running the On

Description	Field	Test	Value
Display only activity for March 9, 2000	A.CCDATE	EQ	'2000-03-09'
Display mobile banking visits by day with totals.	A.CCTYPE AND	EQ	'I'
NOTE: A total count for all days can be seen by navigating to the bottom of the report.	A.CCLOGT	EQ	'W'

All the Canned Queries, most of which are accessed via the Report Builder 1 and 2 menus (MNQUERY and MNQRY2), are documented in the CU*BASE Online Help.

Use Index Keyword “Q” to view a listing of the Canned Queries.

Also check out the “ReportBuilder/CU*BASE Canned Queries” section in the Table of Contents.

TIPS #5-999: How Do I Get Tips on Sample Conditions to Use with the Canned Queries?

It is easy to learn more about using CU*BASE Canned Queries—right in the CU*BASE Online Help! Among other things, the topics on canned Queries include “Sample Conditions,” which will help you find key pieces of information.

Remember, enter keyword “Q” in the Index or use the “ReportBuilder (Canned Queries)” section in the Table of Contents to see a listing of help topics.

- Check out the help topic on “Online Banking Stats (AUDICC)” to find sample conditions on mobile banking usage, such as **“Display mobile banking usage by day with totals.”**
- Check out the help topic on “Loan (MEMBER5)” to find sample conditions for your closed-end loans, such as **“Show all loan accounts with any unpaid delinquency fines.”**
- Check out the help topic on “SH/SD Transactions (TRANS1)” to find sample conditions on your current month transactions such as **“Show how many NSF fees were charged to member accounts during the past week.”**

There are many more examples! Just check out the CU*BASE online help!



6000 28th Street, SE
Grand Rapids, Michigan 49546
<http://www.cuanswers.com> 616-285-5711